

DEMA FLOAT VALVE

MODEL 437P-21

INSTALLATION INSTRUCTIONS

1. PARTS

- A. Valve
- B. Float
- C. Extra Piece of Chain
- D. Vacuum Breaker
- E. Injector
- F. Plastic Tubing
- G. Pipe Fittings: 2 Close Nipples, 6" Nipple, Elbow
- H. Metering Tip Kit (61-9K)

2. INSTALLATION

A. Valve

Mount valve directly on 3/4" NPT pipe with outlet facing upward. Attach vacuum breaker and injector as shown on Fig. 1. The injector outlet must be provided with a length of 3/4" garden hose or pipe extending below the bottom of the float to insure injector priming and to minimize sudsing.

B. Float

Remove the connector from the chain and run the chain through the open end of the lever (Fig. 2) until the top of the float is about 2" above the desired maximum level. Run the excess chain through the connector and snap it on the bead at the lever opening to hold the float in place. An extra piece of chain has been provided if more length is needed.

C. Chemical Concentrate

A metering tip must be selected that will set the desired ratio of chemical to water. Table 1 lists the tips and the dilution rates in terms of oz/gal. After selecting a tip, screw it into the inlet barb of the injector (See Fig. 1). Use the plastic tubing for connecting to the proportioner, first cutting to desired length and dropping the end with strainer into the container. Push the other end over supply tubing fitting on the proportioner.

WARNING: USE CARE WHEN HANDLING HAZARDOUS CHEMICALS

3. OPERATION

Turn on the main water valve. At least 15 psi water pressure must be available to operate the level control. As the tank fills, chemical concentrate will be drawn up through the plastic supply tubing and mix with the incoming water. When the fluid level reaches about 2" below the top of the float, the valve will shut. When the tank level drops several inches, the valve will turn on again. Water flow is 22 GPM at 50 psi pressure.

4. SERVICING

CAUTION: TURN OFF WATER SUPPLY BEFORE SERVICING.

- A. If valve fails to open, check that water supply does not exceed 150 psi. If valve fails to open or close, check for free movement of pull wire. Remove plastic cover to check for free movement of magnet pack. To inspect the pilot valve diaphragm and plunger, remove magnets from enclosing tube. Unscrew the three screws on the enclosing tube assembly and lift off bracket and tube. Inspect parts for dirt or lime deposits in the diaphragm pilot and bleed holes or around the plunger. To inspect the main valve diaphragm, unscrew the screws on the top cover and lift off. Make sure bleed hole is not clogged.
- B. If unit fails to induct chemicals, check the adjusting screw to be sure it is not backed out, and be sure that the water pressure is at least 15 psi. The injector must be primed and the outlet hose must be at least 1 foot long if the feed is above water.
- C. If the unit stops inducting, the foot strainer or detergent passage might be clogged. Remove and soak in hot water.

**DEMA FLOAT VALVE
MODEL 437P-21
INSTALLATION INSTRUCTIONS**

CAUTION: When servicing unit be sure that replacement parts have been
drawing.

installed according to

TIP COLOR	FLUID OZ. PER GAL. OF WATER		
	LIGHT 1 CPS	MEDIUM 75 CPS	HEAVY 220 CPS
Translucent	0.07	0.05	0.04
Purple	0.1	0.07	0.06
Yellow	0.2	0.15	0.13
Green	0.3	0.25	0.2
Pink	0.4	0.3	0.25
Turquoise	0.6	0.5	0.4
Black	0.8	0.75	0.6
Gray	1.2	1.1	0.8
Red	1.5	1.3	1
Blue	2	1.7	1.2
Brown	2.3	2	1.25
White	2.8	2.15	1.3
Orange	3.7	2.3	1.4
None	9.4	5	2
Table 1			

RETURNS:

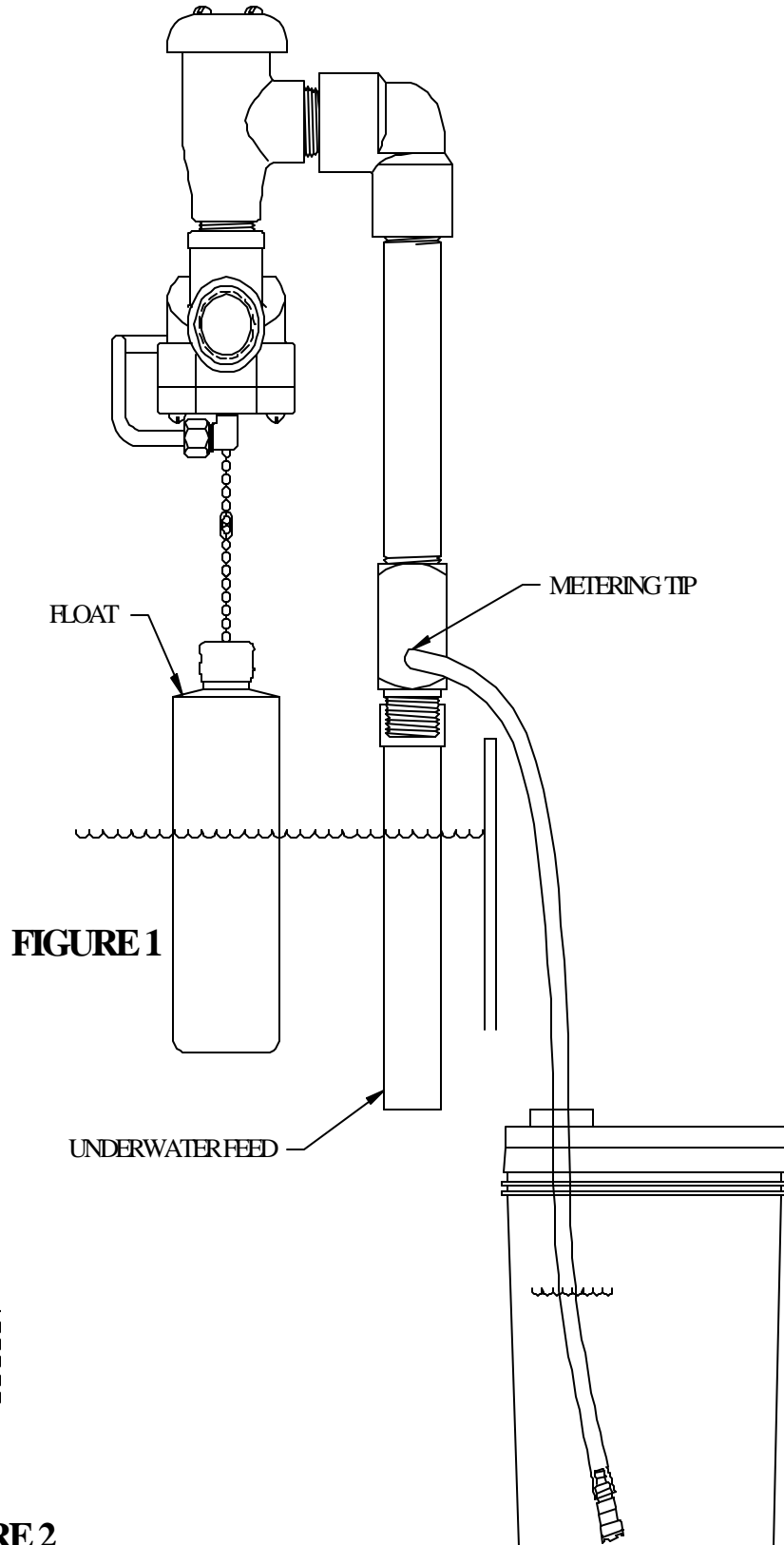
NO MERCHANDISE MAY BE RETURNED FOR CREDIT WITHOUT DEMA'S WRITTEN PERMISSION. RETURN MERCHANDISE AUTHORIZATION NUMBER REQUIRED IN ADVANCE OF RETURN.

WARRANTY:

DEMA products are warranted against defective material and workmanship under normal use and service for one year from the date of manufacture. This limited warranty does not apply to any products which have a normal life shorter than one year or failure and damage caused by chemicals, corrosion, improper voltage supply, physical abuse, or misapplication. Rubber and synthetic rubber parts such as "o"- rings, diaphragms, squeeze tubing and gaskets are considered expendable and are not covered under warranty. This warranty is extended only to the original buyer of DEMA products. If products are altered or repaired without prior approval of DEMA, this warranty will be void.

Defective units or parts should be returned to the factory with transportation prepaid. If inspection shows them to be defective, they will be repaired or replaced without charge, F.O.B. factory. DEMA assumes no liability for damages. Return merchandise authorization number, to return units for repair or replacement, must be granted in advance of return.

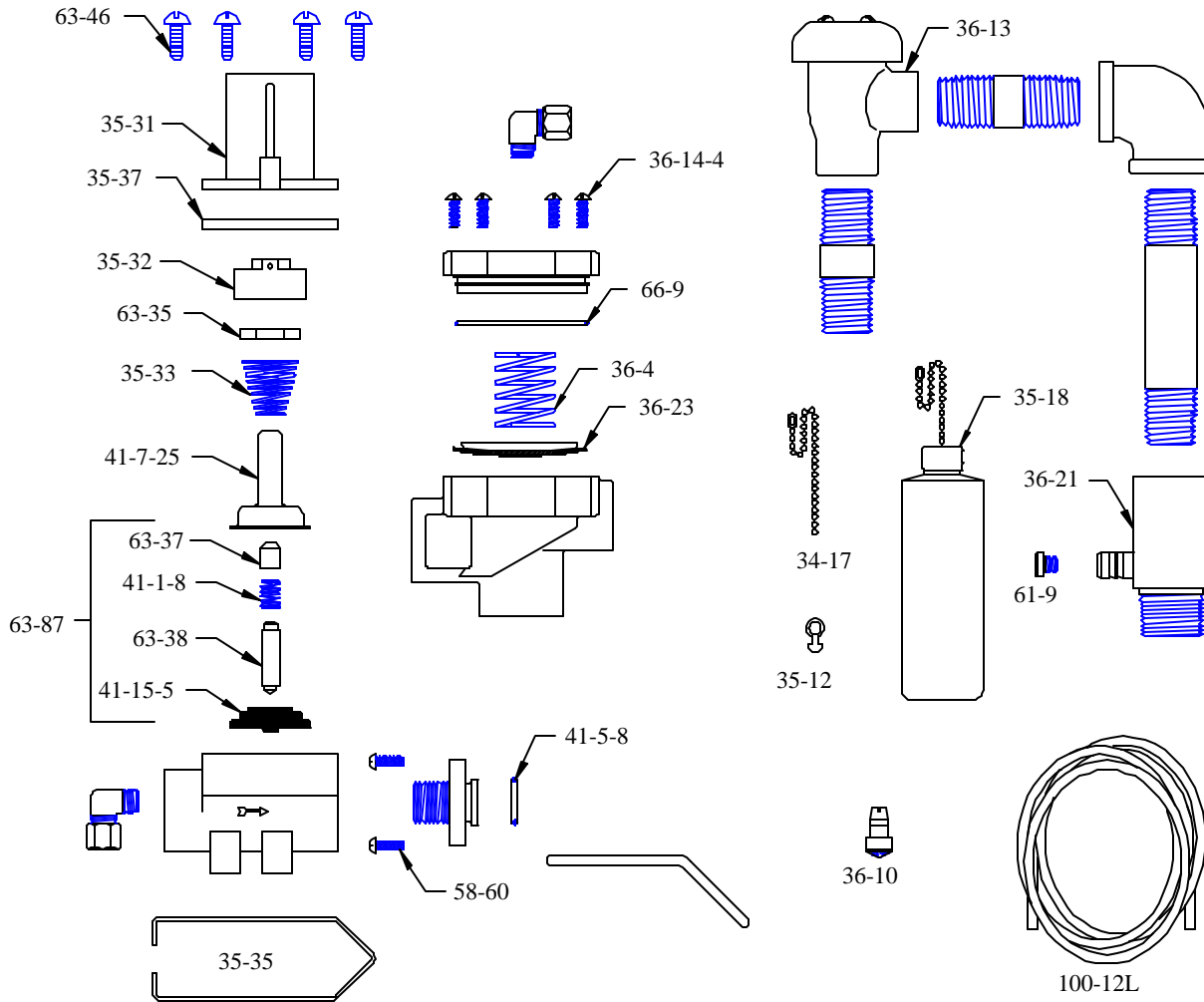
DEMA FLOAT VALVE MODEL 437P-21 INSTALLATION INSTRUCTIONS



DEMA FLOAT VALVE

MODEL 437P-21

INSTALLATION INSTRUCTIONS



PART NO.	DESCRIPTION
34-17	16" CHAIN W/ CONNECTOR
35-31	MAGNET COVER
35-12	FLOAT HANGER CLIP
35-35	FLOAT HANGER WIRE
35-18	FLOAT ASSEMBLY
35-32	MAGNET HOLDER
35-33	MAGNET SPRING
35-37	FLANGE
36-4	CLOSING SPRING
36-10	FOOT VALVE
36-13	VACCUM BREAKER
36-14-4	VALVE COVER SCREW (4-REQD)
36-21	INJECTOR
36-23	DIAPHRAGM ASSEMBLY
36-30	PIPE ELBOW-3/4 NPT

PART NO.	DESCRIPTION
41-1-8	KICK-OFF SPRING
41-5-8	O-RING
41-7-25	ENCLOSING TUBE
41-15-5	DIAPHRAGM
58-60	MACHINE SCREW (2 REQD)
61-9	METERING TIP-SPECIFY COLOR
61-9K	METERING TIP KIT-13 TIPS
63-35	MAGNET
63-37	SPACER
63-38	PLUNGER
63-46	VALVE COVER SCREW (4-REQD)
63-87	VALVE REPAIR KIT
66-9	O-RING
100-12L	PLASTIC TUBING 3/8 ID 8" LG.